

DR-05

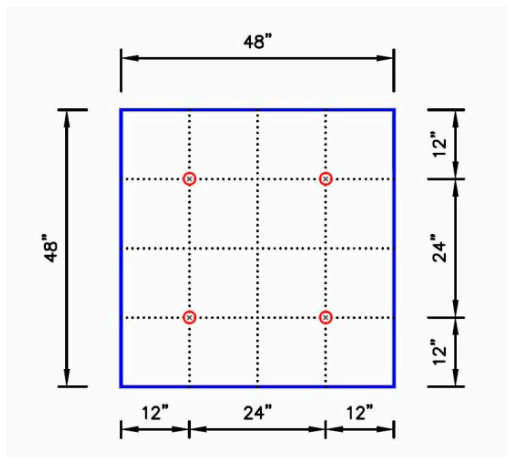
Insulation Fastening Patterns

July 2024

The information contained represents guidelines to address possible requirements as part of the building specification as listed under the Quality Insurance or Performance Article. Carlisle recommends that the building owner retain a design professional to verify that these guidelines are appropriate.

When enhanced insulation fastening is required as prescribed in Factory Mutual Loss Prevention Data Sheet 1-29, ANSI/SPRI WD-1, or Miami-Dade County, the specifier may consider the enclosed insulation pattern securements. **Note: All insulation and underlayment shown are the minimum thickness required for the established rating.**

Insulation Patterns for boards 4' x 4' in size



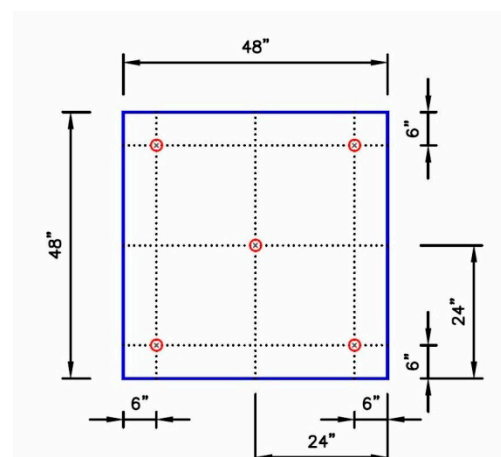
4 Insulation Fasteners & Plates

Only FM 1-90 for:

2" Polyiso HP-H/Insulbase or SecurShield

1/2" SecurShield HD Plus

5/8" Dens Deck Prime, DensDeck StormX Prime or Securock

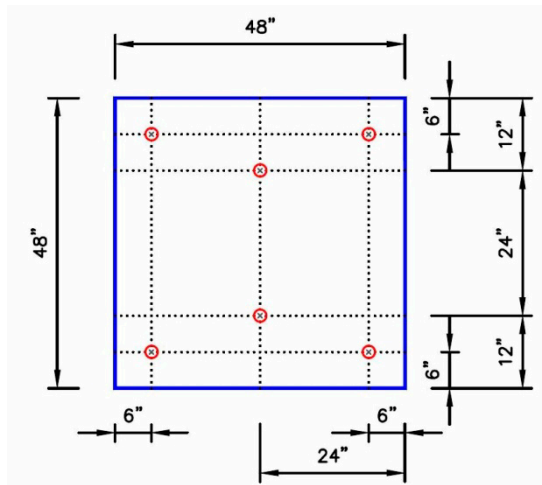


5 Insulation Fasteners & Plates

Only FM 1-90 for:

1/2" Securock

1-1/2" Polyiso HP-H/Insulbase (base layer fastened only)



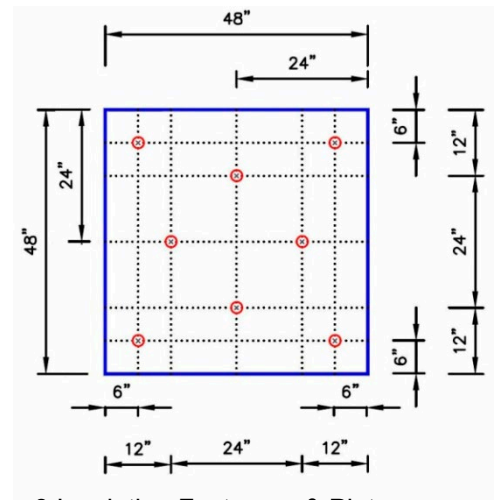
6 Insulation Fasteners & Plates

FM 1-90 for:

1/4" Dens Deck Prime

FM 1-75 for:

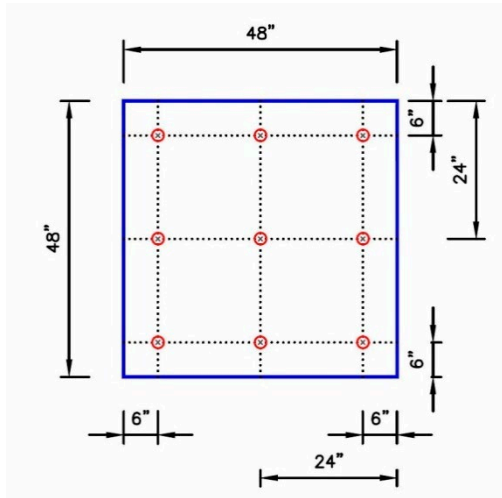
1/4" Securock



8 Insulation Fasteners & Plates

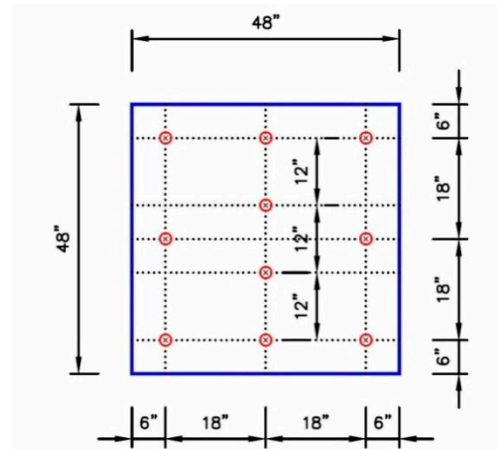
FM 1-90 for all except:

1" Polyiso HP-H/Insulbase
(recover only)



9 Insulation Fasteners & Plates

Fastening pattern should only be used when required by FM for perimeter or corner enhancement or required by Carlisle for issuance of extended wind speed warranty.



10 Insulation Fasteners & Plates

FM 1-150 for:

2" Polyiso HP-H/Insulbase (EPDM, TPO and FleeceBACK)

1/2" Securock (EPDM, TPO and FleeceBACK)

FM 1-135 for:

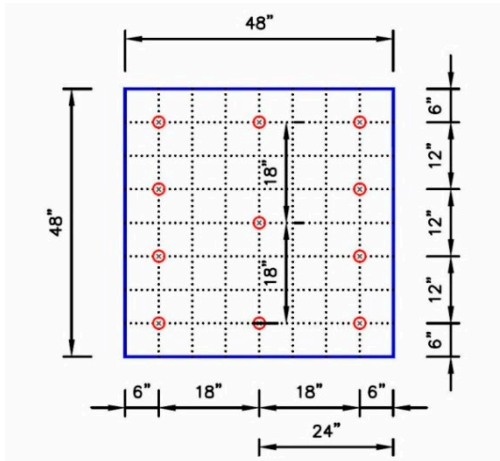
2" Polyiso HP-H/Insulbase (PVC)

FM 1-105 for:

1/2" Dens Deck Prime

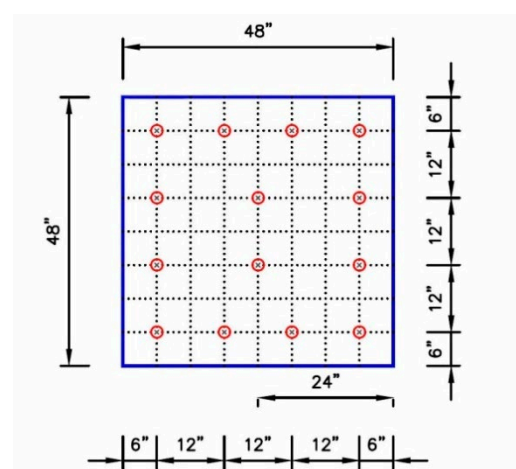
FM 1-90 for:

1-1/2" Polyiso HP-H/Insulbase (Recover)



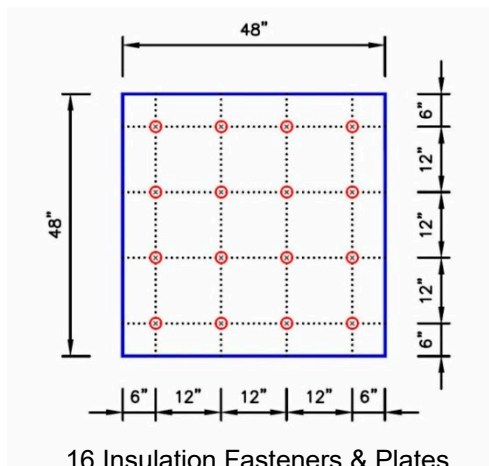
11 Insulation Fasteners & Plates

Fastening pattern should only be used when required by FM for perimeter or corner enhancement or required by Carlisle for issuance of extended wind speed warranty.



14 Insulation Fasteners & Plates

Fastening pattern should only be used when required by FM for perimeter or corner enhancement or required by Carlisle for issuance of extended wind speed warranty.



16 Insulation Fasteners & Plates

FM I-285 for:

1/2" Dens Deck Prime (FleeceBACK)

FM 1-225 for:

2" SecurShield

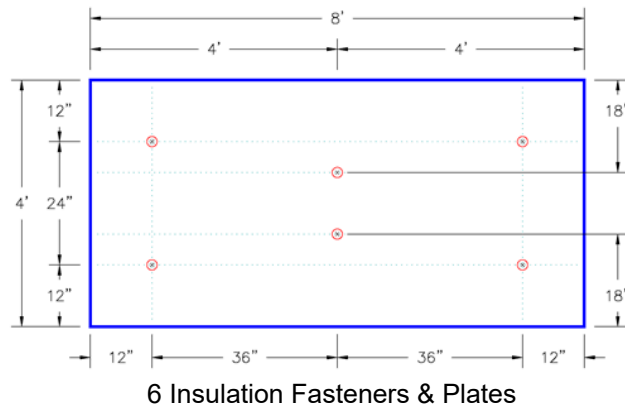
2" Polyiso HP-H/InsulBase (FleeceBACK)

1/2" Securock

FM 1-195 for:

2" Polyiso HP-H/InsulBase (EPDM and TPO)

Insulation Patterns for boards 4' x 8' in size

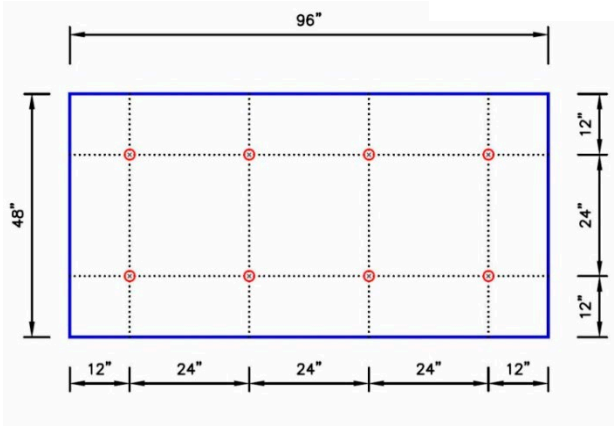


FM 1-75 for:

1/2" Securock (with InsulFAST fasteners and SecurFAST Plates)

FM 1-90 for:

5/8" Securock (with InsulFAST fasteners and SecurFAST Plates)



8 Insulation Fasteners & Plates

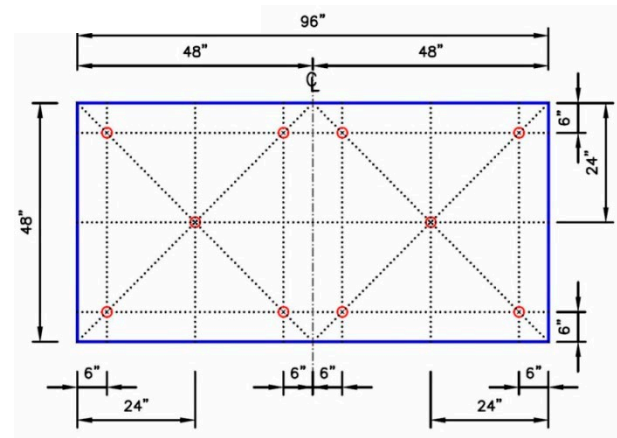
FM 1-90 for:

2" Polyiso HP-H/InsulBase/InsulBase
NH/InsulBase RL or SecurShield

1/2" SecurShield HD Plus

5/8" Dens Deck Prime, DensDeck StormX
Prime or Securock

5/8" or 1/2" Securock (with InsulFAST
fasteners and SecurFAST Plates)

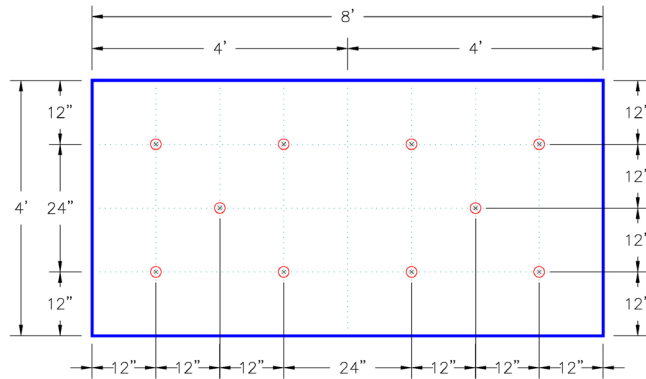


10 Insulation Fasteners & Plates

FM 1-90 for:

1/2" Securock

1-1/2" Polyiso HP-H/InsulBase/InsulBase
NH/InsulBase RL (base layer fastened
only)

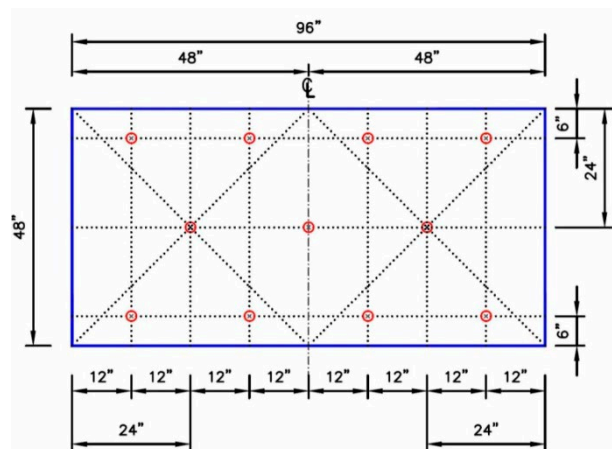


10 Insulation Fasteners & Plates

FM 1-90 for:

1/4" Securock (with InsulFAST fasteners and SecurFAST Plates)

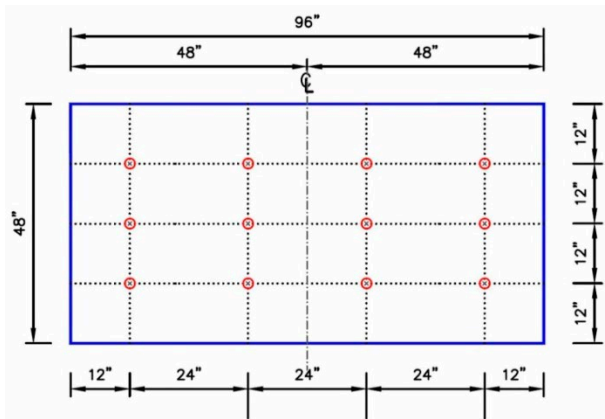
1/2" Dens Deck Prime



11 Insulation Fasteners & Plates

FM 1-90 for:

1-1/2" Polyiso HP-H/InsulBase/InsulBase NH/InsulBase RL



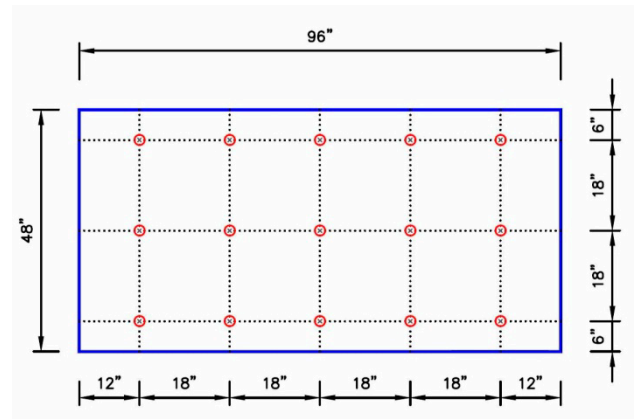
12 Insulation Fasteners & Plates

FM 1-90 for:

1/4" Dens Deck Prime

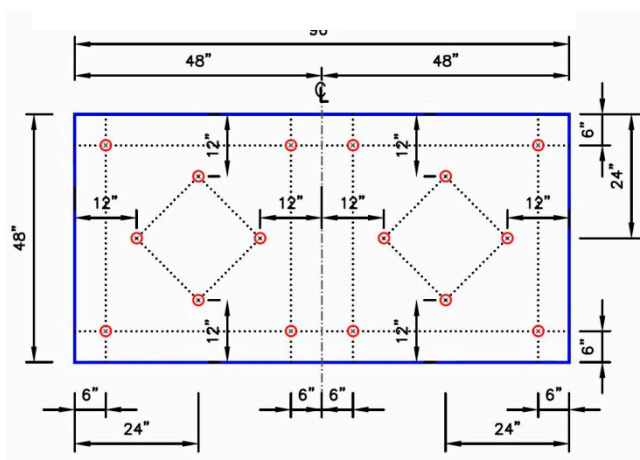
FM 1-75 for:

1/4" Securock

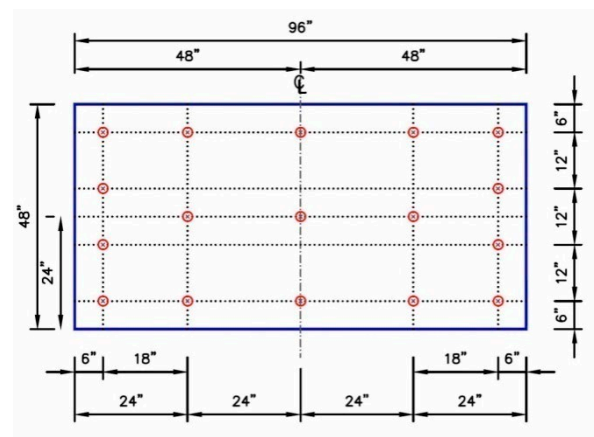


15 Insulation Fasteners & Plates

Fastening pattern should only be used when required by FM for perimeter or corner enhancement or required by Carlisle for issuance of extended wind speed warranty.



16 Insulation Fasteners & Plates



17 Insulation Fasteners & Plates

FM 1-90 for all except:

1" Polyiso HP-H/InsulBase/InsulBase NH/InsulBase RL (Recover Only)

FM 1-105 for:

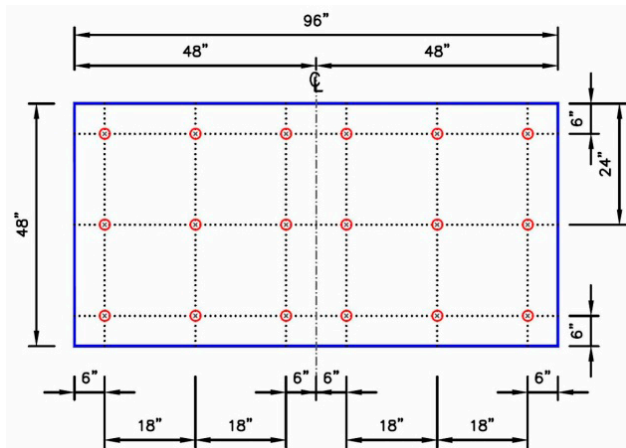
7/16" OSB (EPDM)

FM 1-150 for:

7/16" OSB (TPO and FleeceBACK)

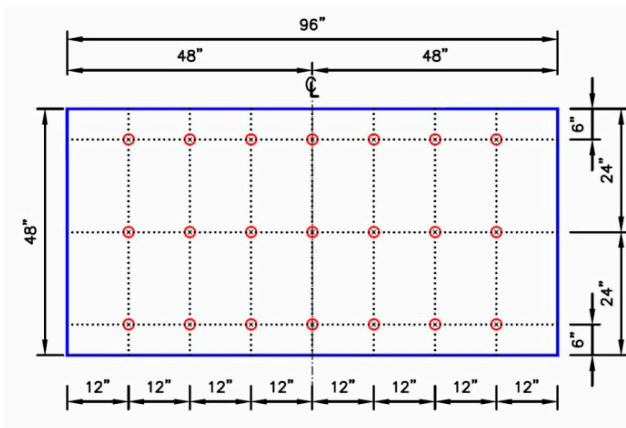
FM-120 for:

7/16" OSB (PVC)



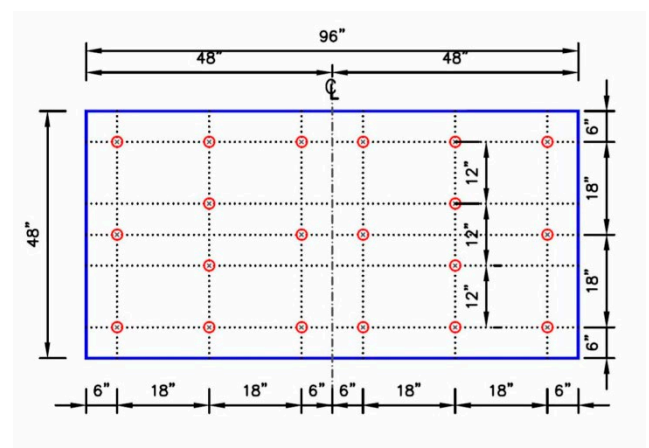
18 Insulation Fasteners & Plates

Fastening pattern should only be used when required by FM for perimeter or corner enhancement or required by Carlisle for issuance of extended wind speed warranty.



21 Insulation Fasteners & Plates

Fastening pattern should only be used when required by FM for perimeter or corner enhancement or required by Carlisle for issuance of extended wind speed warranty.



20 Insulation Fasteners & Plates

FM 1-150 for:

2" Polyiso HP-H/InsulBase/InsulBase NH/InsulBase RL (EPDM, TPO and FleeceBACK)

1/2" Securock (EPDM, TPO and FleeceBACK)

1-1/2" SecurShield HD Composite

2" SecurShield HD Composite RL

FM 1-135 for:

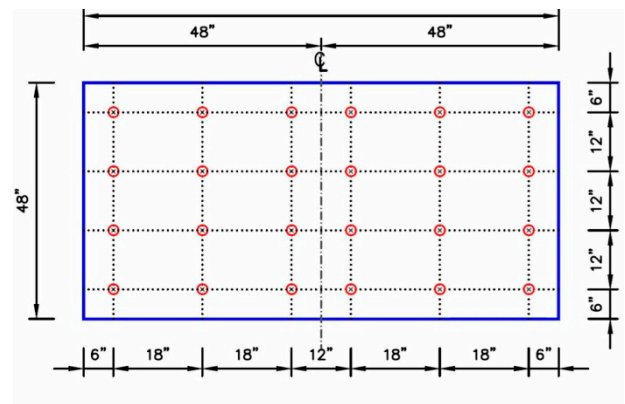
2" Polyiso HP-H/InsulBase/InsulBase NH/InsulBase RL (PVC)

FM 1-105 for:

1/2" Dens Deck Prime

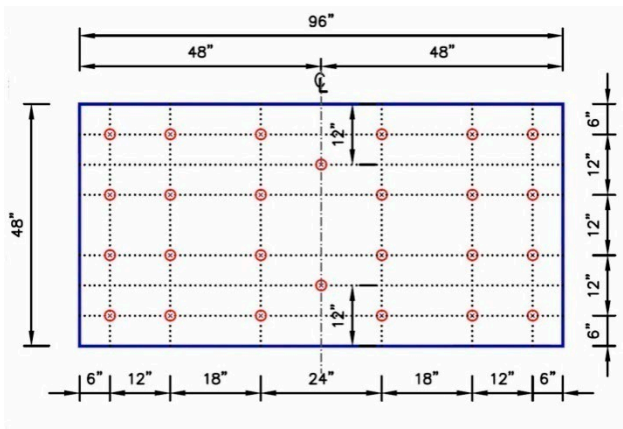
FM 1-90 for:

1" Poyiso HP-H/InsulBase/InsulBase NH/InsulBase RL (Recover)



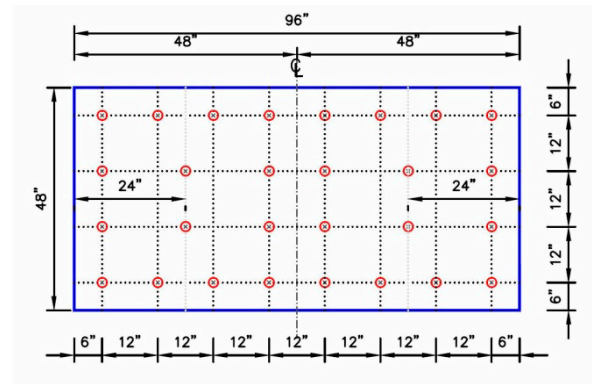
24 Insulation Fasteners & Plates

Fastening pattern should only be used when required by FM for perimeter or corner enhancement or required by Carlisle for issuance of extended wind speed warranty.



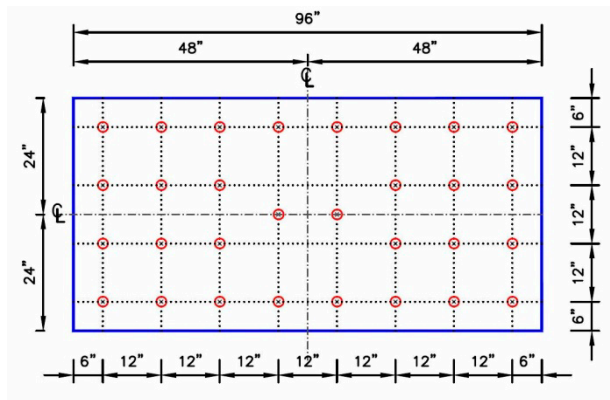
26 Insulation Fasteners & Plates

Fastening pattern should only be used when required by FM for perimeter or corner enhancement or required by Carlisle for issuance of extended wind speed warranty.



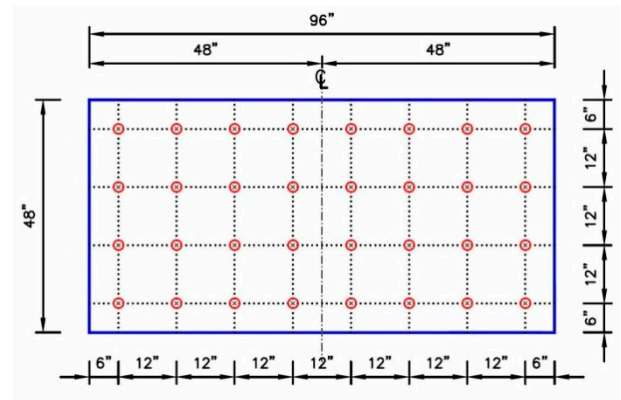
28 Insulation Fasteners & Plates

Fastening pattern should only be used when required by FM for perimeter or corner enhancement or required by Carlisle for issuance of extended wind speed warranty.



30 Insulation Fasteners & Plates

Fastening pattern should only be used when required by FM for perimeter or corner enhancement or required by Carlisle for issuance of extended wind speed warranty.



32 Insulation Fasteners & Plates

FM 1-225 for:

2" SecurShield

1/2" Securock

2" Polyiso HP-H/InsulBase/InsulBase NH/InsulBase RL (FleeceBACK)

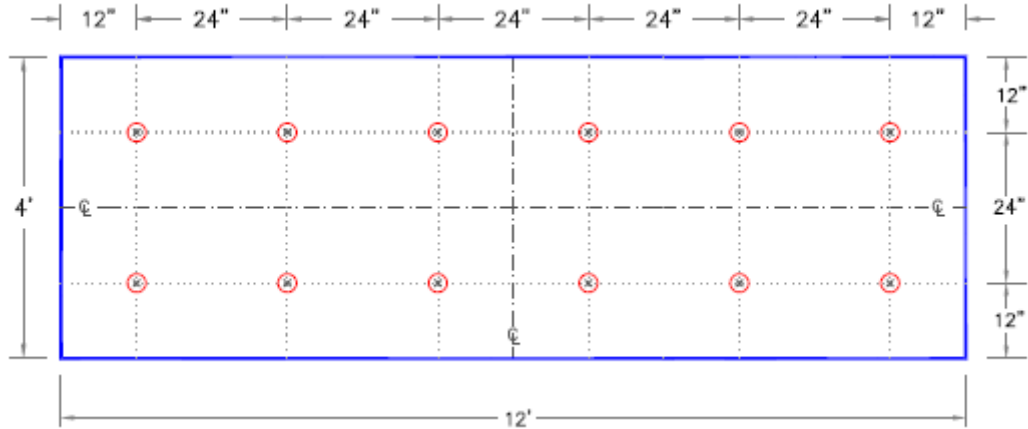
FM 1-195 for:

2" Polyiso HP-H/InsulBase/InsulBase NH/InsulBase RL (EPDM and TPO)

FM 1-285 for:

1/2" Dens Deck Prime (FleeceBACK)

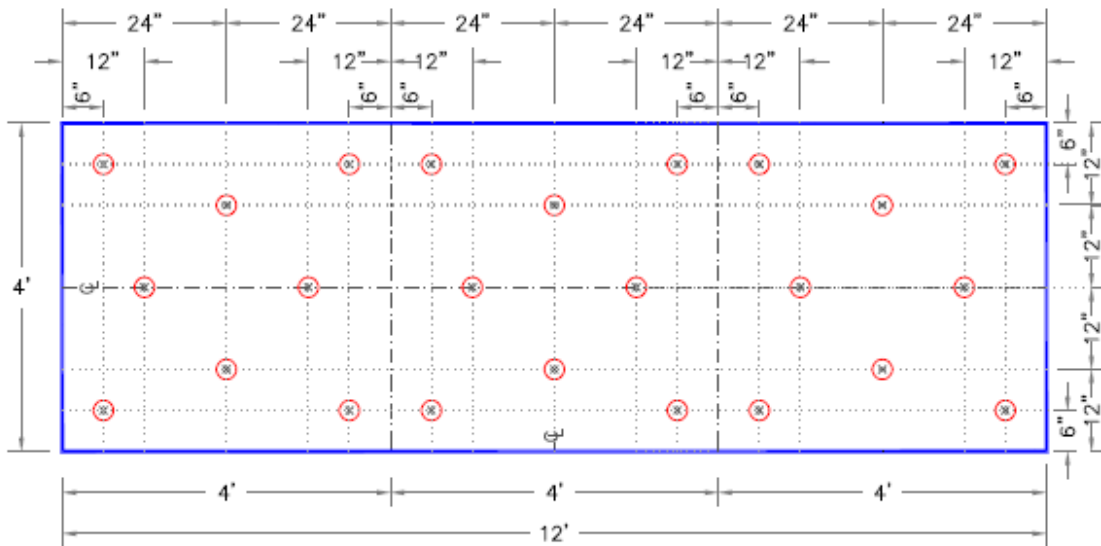
Insulation Patterns for boards 4' x 12' in size.



12 Insulation Fasteners & Plates

FM 1-90 for:

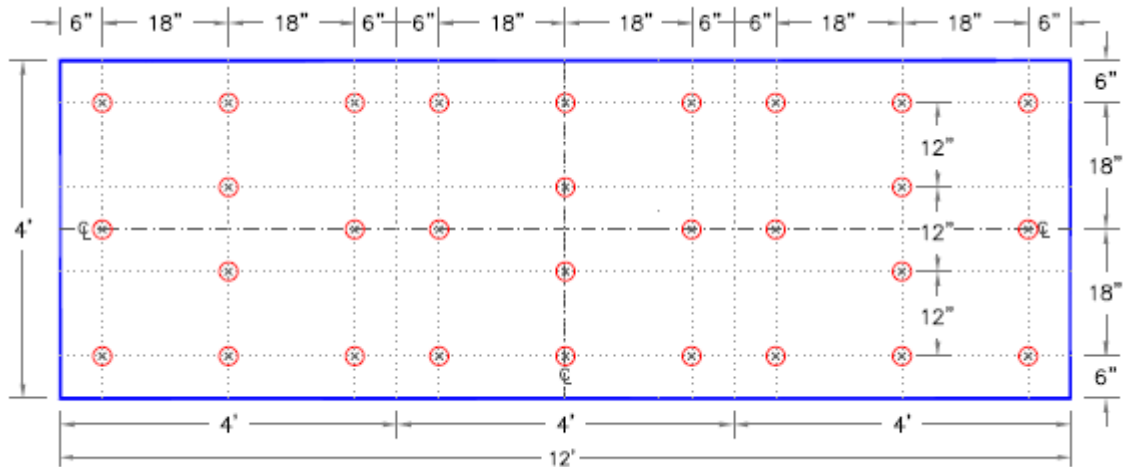
2" Polyiso HP-H/InsulBase/InsulBase
NH/InsulBase RL



24 Insulation Fasteners & Plates

FM 1-90 for all except:

1" Polyiso HP-H/InsulBase/InsulBase NH/ InsulBase RL (Recover Only)



30 Insulation Fasteners & Plates

FM 1-150 for:

2" Polyiso HP-H/InsulBase/InsulBase NH/InsulBase RL (EPDM, TPO and FleeceBACK)

FM 1-135 for:

2" Polyiso HP-H/InsulBase/InsulBase NH/InsulBase RL (PVC)